

## PKI smart card solution implementation - Strong, easy-to-manage enterprise IT security and compliance

### THE INFORMATION SECURITY CHALLENGE

Enterprises across the public and private sectors have to protect access to their IT systems, safeguarding their own interests and operations, as well as complying with both general and sector-specific regulations.

Whether they have many thousands of users, or a hundred, enterprises need a secure access solution that's cost-effective, can be seamlessly integrated with their existing and future Windows infrastructure, and is easy-to-manage operationally.

### A STANDARDS-BASED SOLUTION

Out of the many two-factor security solutions available, including one-time-passcodes and USB key technologies, once customers have considered all the various operational and security aspects, the preferred solution is often one using PKI standards-based smart cards - because of the benefits below:

- ◇ **Strong PKI certificate-based log-on.** 'Gold-standard' asymmetric security utilising smart cards' proven hardware security features to protect, and never share, private keys.
- ◇ **Windows' native support for PKI smart cards,** requiring minimal client software configuration.
- ◇ **Use of existing Microsoft Active Directory and Certificate Authority infrastructure** for the management of users and certificates.
- ◇ **Cost-effective and flexible administration software** for key management, and full credential life-cycle management from issuance to handling lost or stolen cards.
- ◇ **Use as official photo ID** (e.g Police warrant card), with secure printing of smart cards.
- ◇ **Multi-application access control.** A single card can be used for all applications, including contactless door access and print management.

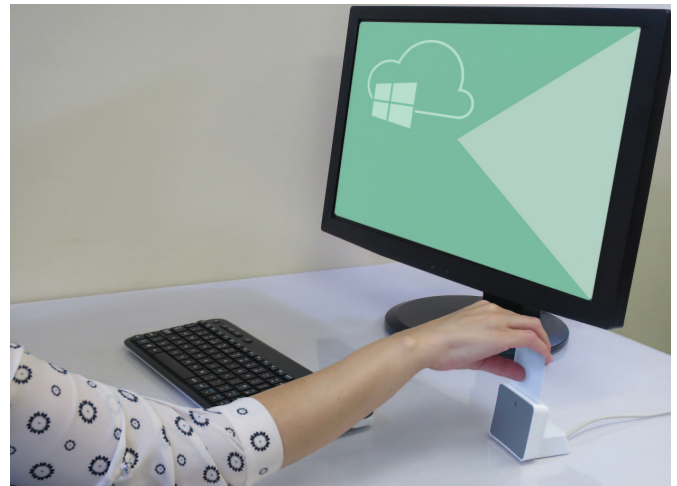
**THALES** **HID** **versasec**

[info@dotorigin.com](mailto:info@dotorigin.com)

UK HQ (Worldwide coverage)  
+44 (0)1428 685 861

*"Dot Origin's approach of hands-on solution demonstration helped us see end-to-end processes and understand the critical considerations up-front".*

**ICT Infrastructure Services Manager**  
at one of the UK's largest Police forces



### SUPPORT FROM CONCEPT TO DEPLOYMENT

Dot Origin is an independent value-added distributor for leading smart card hardware and software vendors, including Thales (previously Gemalto), HID and Versasec. An organisation's established service or framework supplier often brings in Dot Origin as their expert partner for PKI smart card solutions.

Rather than giving glossy sales presentations, Dot Origin prefers to work with their specialist vendors and the customer's established supplier to deliver low cost, quick-start proof-of-concept implementations.

This approach not only proves solution effectiveness, operational fit and ease of management, but also enables rapid wide-scale deployment when desired.

Dot Origin has helped many hundreds of organisations implement PKI smart card logon solutions, from UK Police forces and energy suppliers to global Wealth Management businesses and engineering companies.

Get in touch to learn more.

[www.dotorigin.com](http://www.dotorigin.com)

US Office (Northern and Latin America)  
Toll Free: +1 888-262-9642 / Direct: +1 562-262-9642